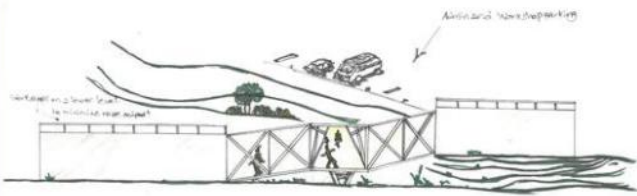
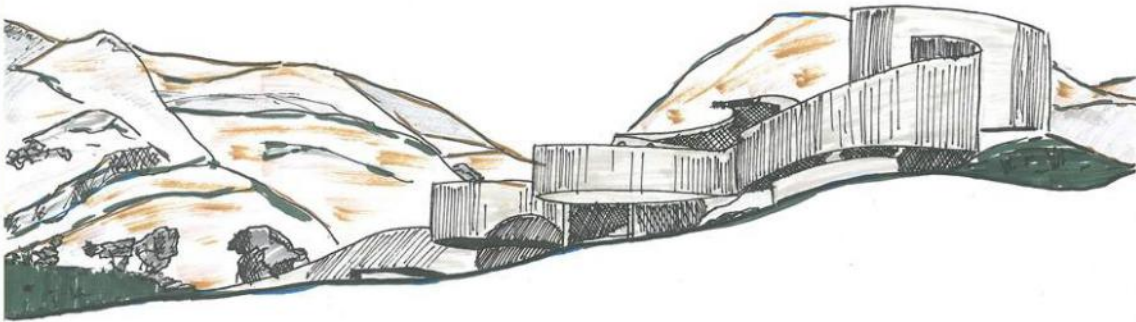
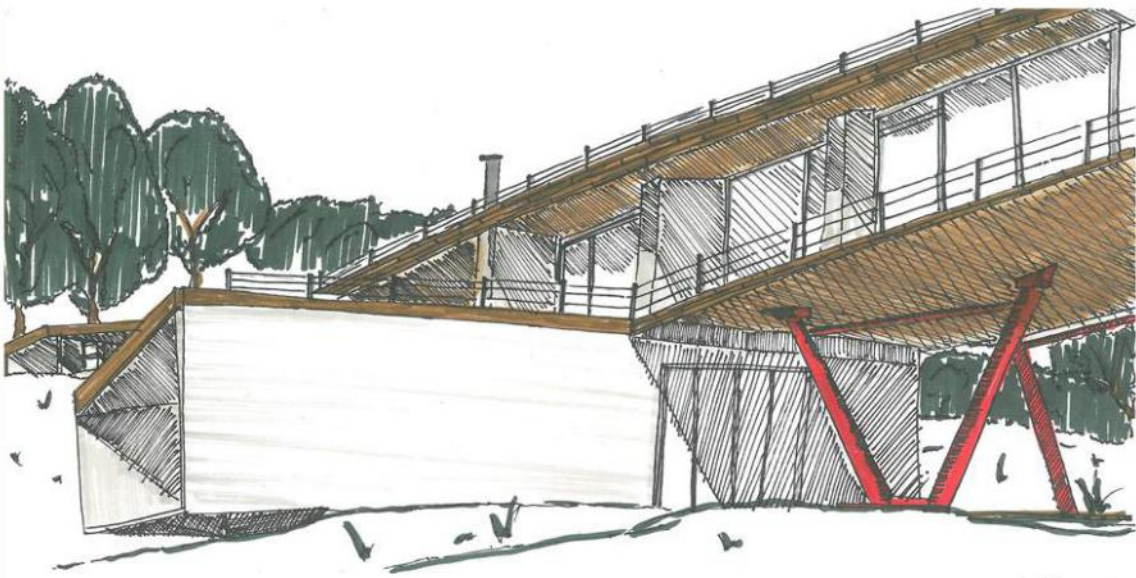
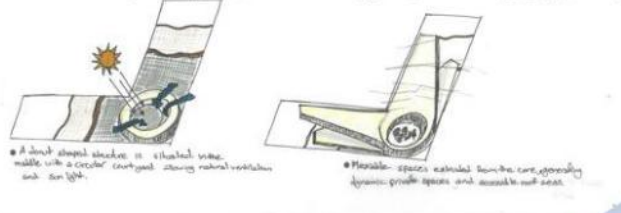
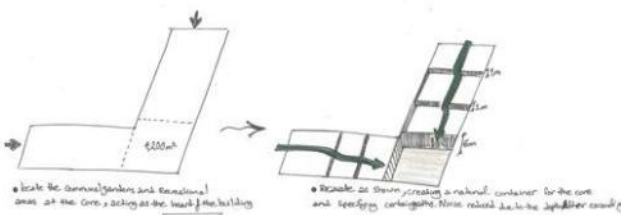


The image features a large, stylized graphic element resembling a corner or a bracket. It is composed of thick blue lines. On the left, a vertical blue line meets a diagonal blue line at the bottom-left corner. From the top of this diagonal line, another diagonal blue line extends upwards and to the right, meeting a vertical blue line at the top-right corner. The background is white, with a vertical orange bar on the far left and a vertical grey gradient bar on the far right.

University Portfolio

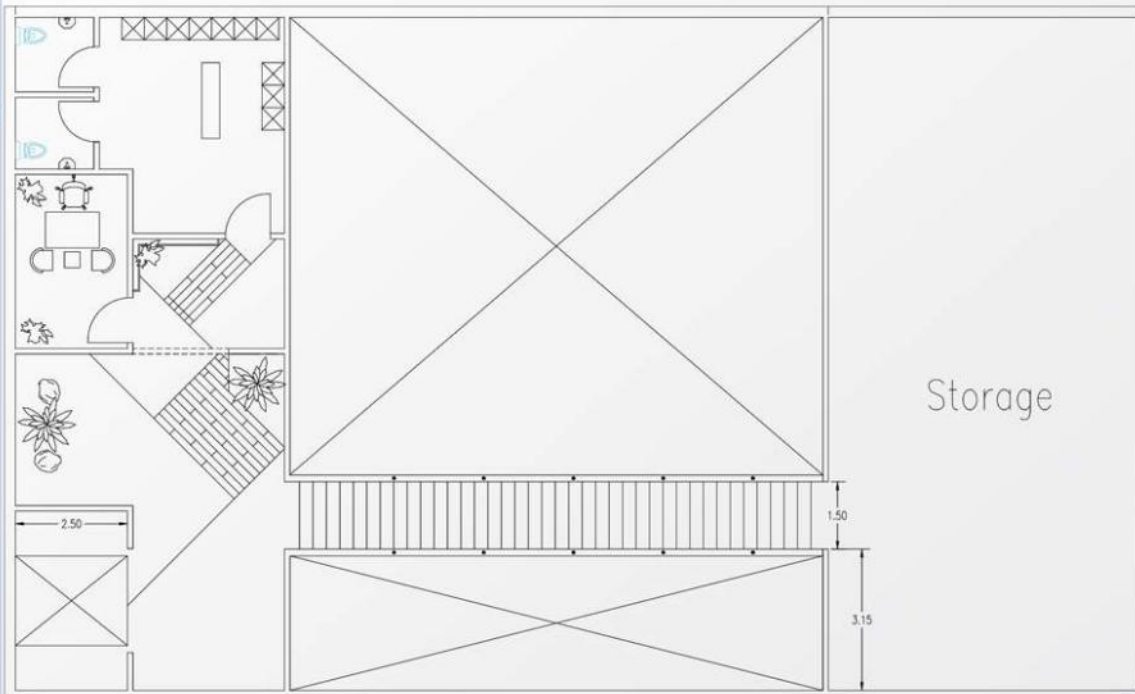
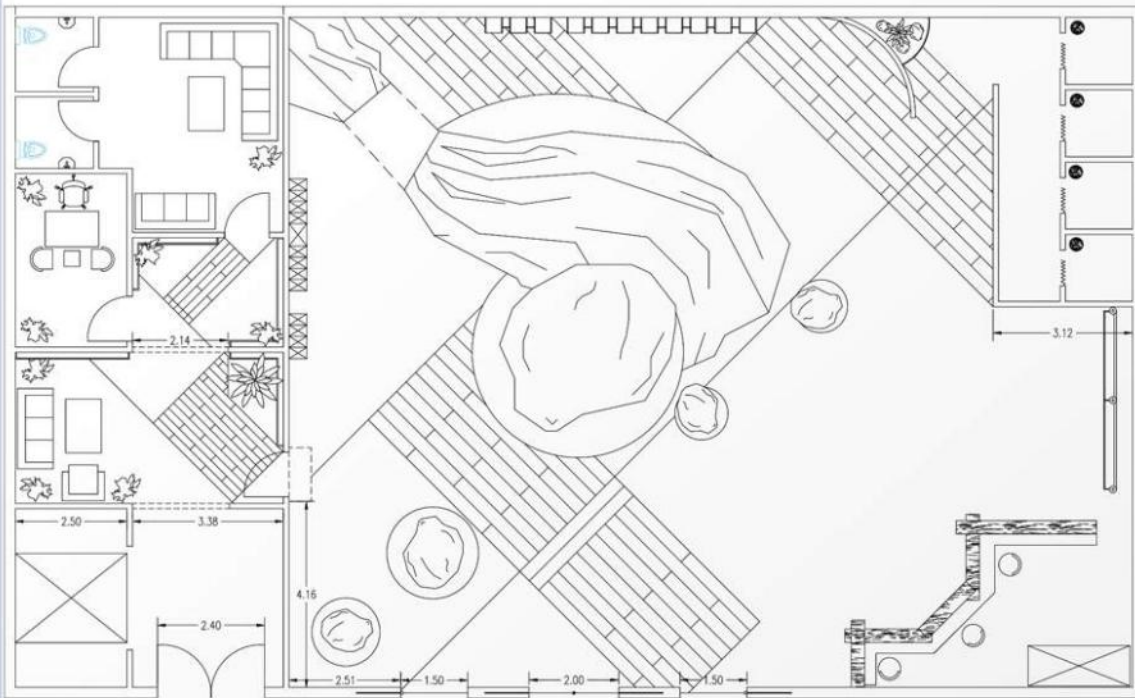


NUMERICAL SECTION 1100



MUHAMMAD ENAB

Recent free hand sketches of two existing structures, one is Hotel Atra Doftna which is located on Romania and the other is Reiluf Ramstad located in Norway. The sketch of Atra Doftna was drawn during my summer internship in Romania with AIESEC and the other sketch used web images and illustrations as reference. These sketches are picked straight off some brainstorming drawings during my design and urban courses.

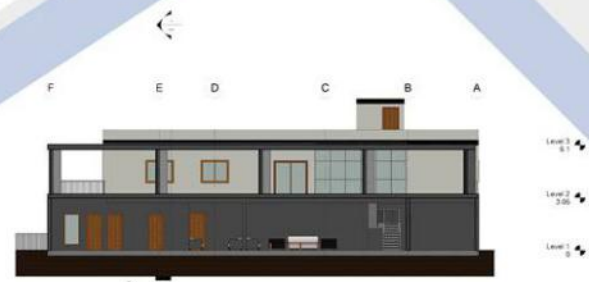
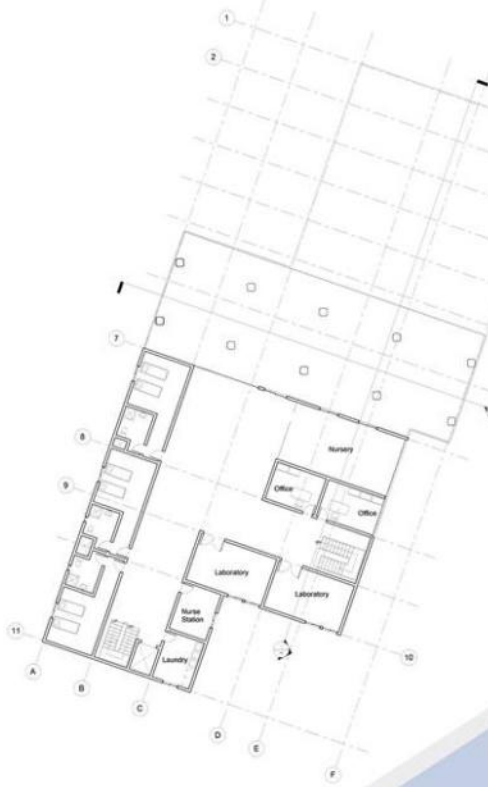


During the Interior design and refurbishment course, students were asked to design a retail shop and to provide complete plans of finishes and furnishing. This project features a hiking and skiing equipment store that is 2 stories height with an accessible themed bridge on the second floor. The idea was to provide users with a strong sense of place resembling the euphoria and adrenalin rushes of mountaineering. Double heights and a massive rocky formation in the middle helped achieve the wanted scale difference between the user and the space. This project was drafted entirely in AutoCAD.

architecture plans

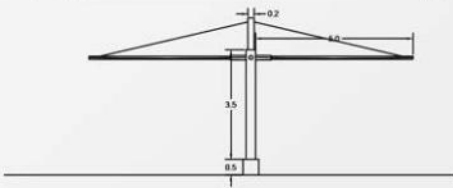
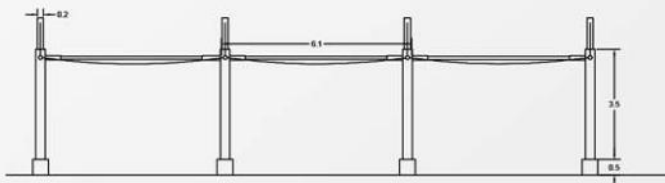
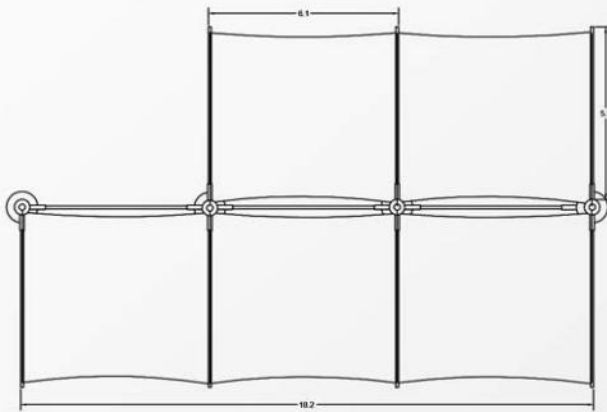
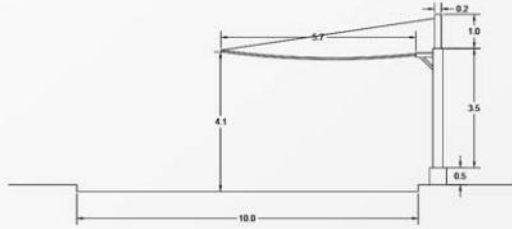
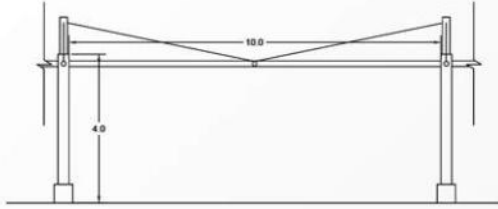
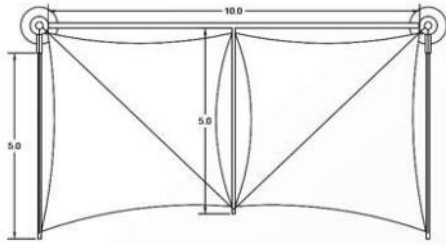


This one week design project required students to design a rural family medical center about one to two storey high, with several specialty clinics and rooms for short term stay as well as all other necessary and appropriate spaces. The design phase involved crucial environmental analysis in order to effectively locate each space within the medical center and an adequate circulation with ease of wayfinding since it is a sensitive building. A grid of multiples of 2.4 meters was taken as reference to make sure that the smallest of spaces can allow the movement of hospital beds and other clinical related activities. This project was primarily drafted and rendered using Revit architecture.



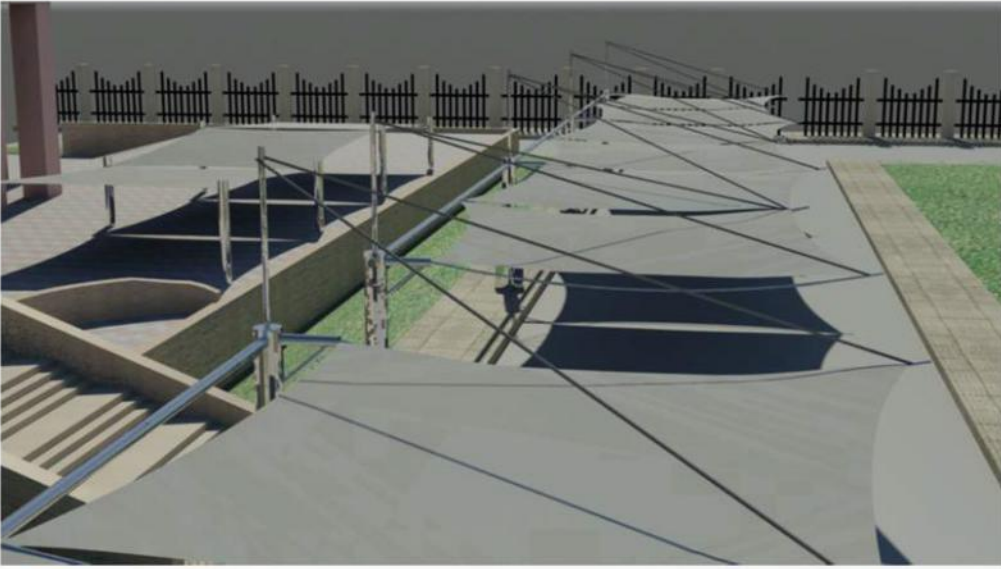
D
e
s
i
g
n
P
r
o
j
e
c
t



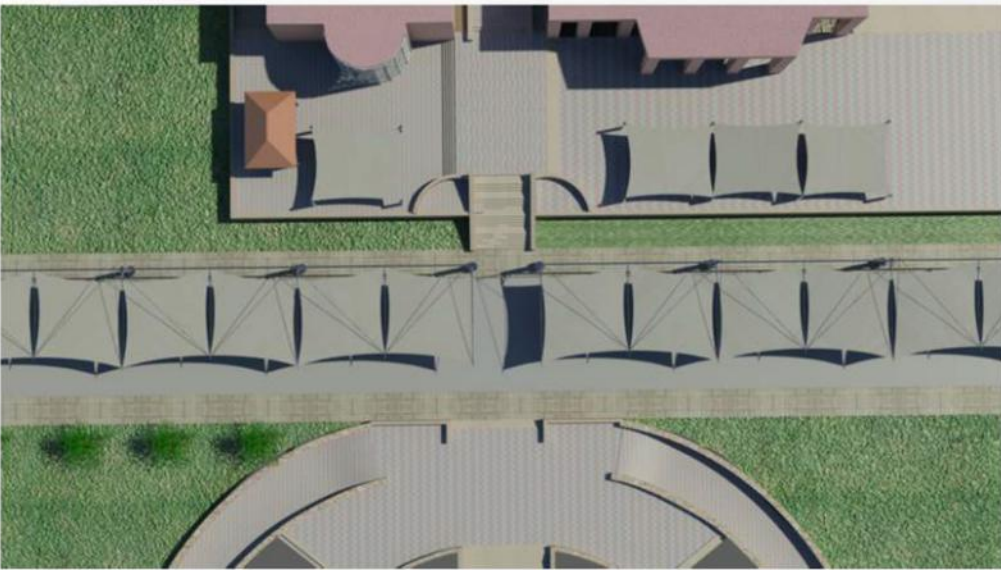


During the advanced construction course, students were asked to research and design a suitable shading device for part of the university campus. This project features a simple approach of incorporating cable-stayed beam elements with shading fabrics in order to design an iterated linear shading device. Supporting columns are used from old galvanized iron poles and recycled metal work from the universities workshops. The project is drafted using AutoCAD, modeled in 3D Studio max and rendered through Mental Ray.

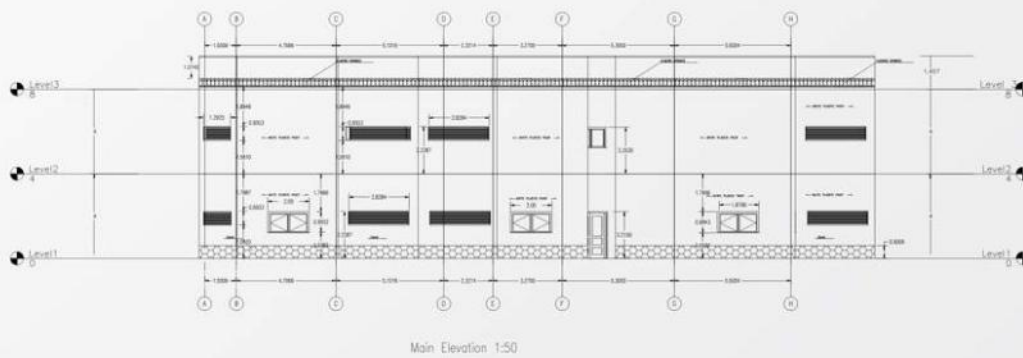
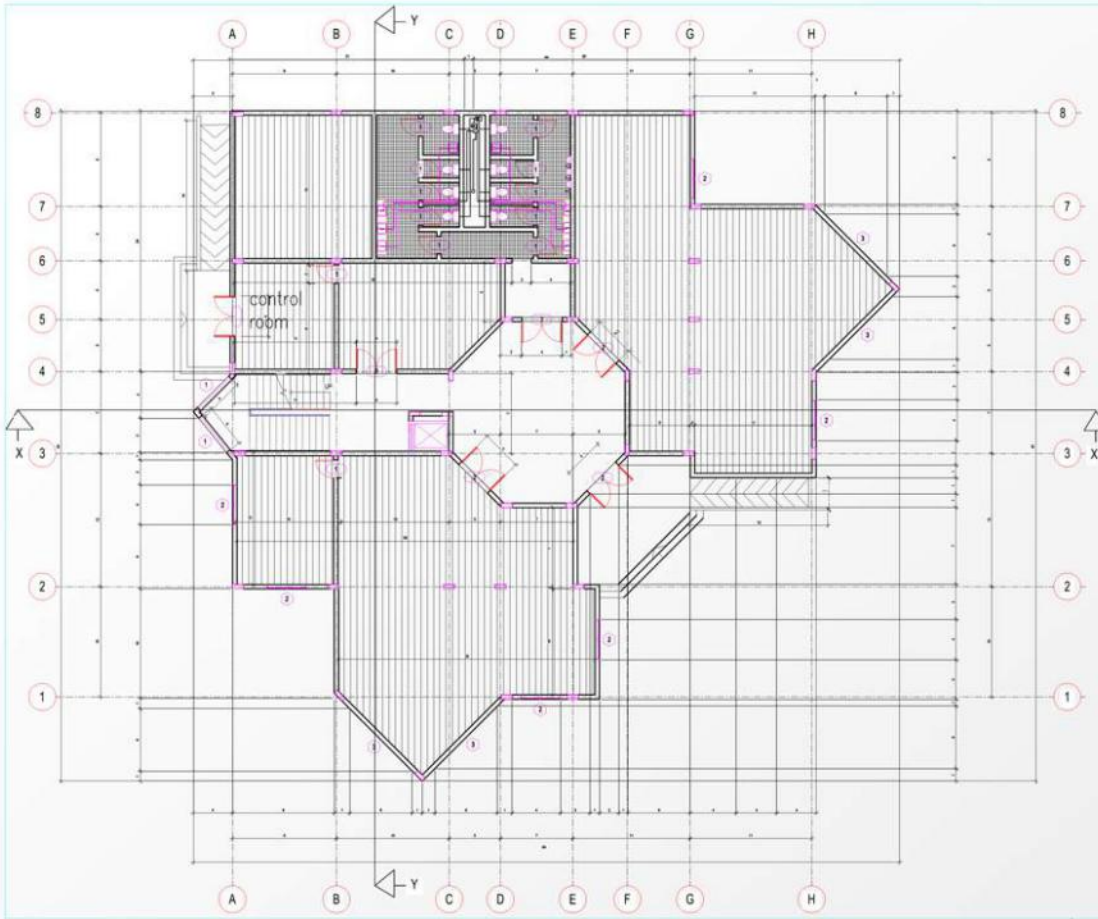
S
h
a
d
i
n
g



D
e
v
i
c
e

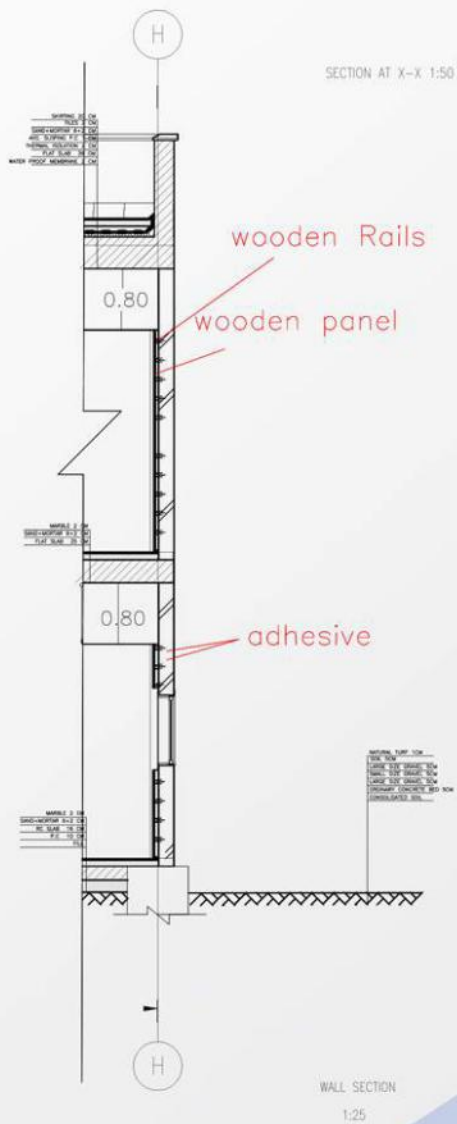
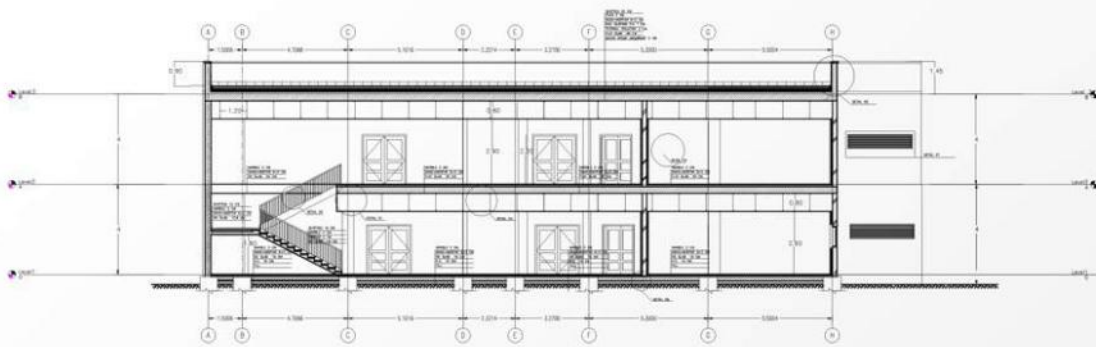


3D
shots



The working drawings and execution courses helped build a solid background about building systems, fire safety, sanitation and interior finishing. This project features a library with a fully designed structural system, sections, wall section details and sanitary work in toilets. Drafting of this project was done through AutoCAD and Revit architecture.

Plan & Elevation



Section & Details