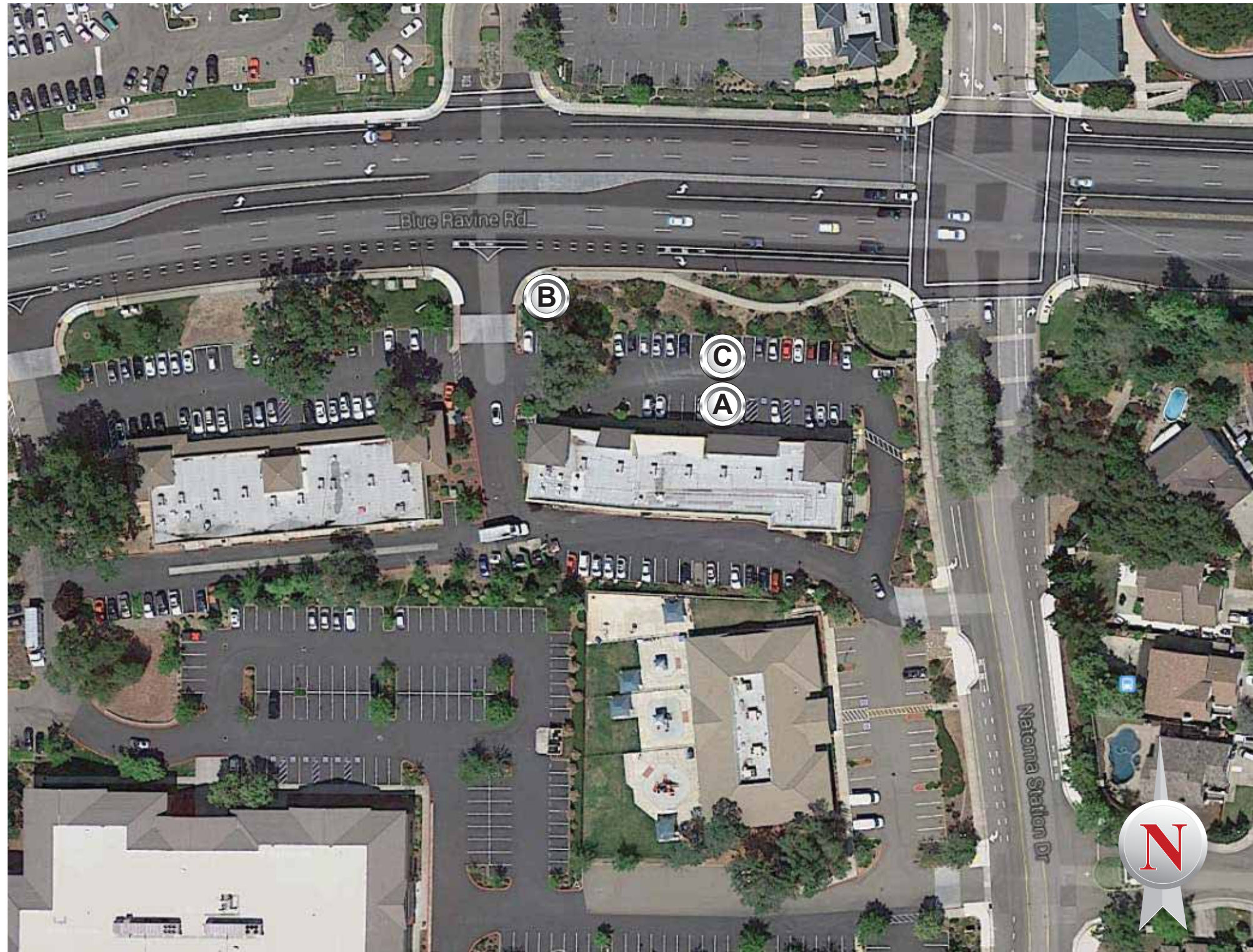


SITE PLAN



SIGNAGE SPECIFICATIONS

- (A) CHANNEL LETTERS**
Manufacture and Install (1) set of Channel Letters
- (B) TENANT PANEL**
Manufacture and Install (2) Tenant Panels
- (C) ATM WITH SURROUND**
Manufacture and Install (1) ATM with Surround

AREA MAP



Date: 11-19-14
Project Name: BANK OF AMERICA
Scale: NTS
Address: 199 Blue Ravine,
Drawn: Chris C.
City / State: Folsom, CA 95630
Sales: Ron W.
Client Approval: _____
Date: _____

This is an original unpublished drawing created by Coast Sign, Inc. It is submitted for your personal use in conjunction with a project being planned for you by Coast Sign, Inc., and shall not be reproduced, used by or disclosed to any firm or corporation for any purpose whatsoever without written permission.

No.	Designer	Date	Revision Notes
1	Blaise S.	12-12-14	Refer to PATHFINDER request for more details.
2	Flor B.	01-12-15	Refer to PATHFINDER request for more details.
3	Hermes A.	02-09-15	Refer to PATHFINDER request for more details.
4	JJ	02-17-15	Refer to PATHFINDER request for more details.
5	HA	2-23-15	Refer to PATHFINDER request for more details.
6	Blaise S.	02-26-15	Refer to PATHFINDER request.

DESIGN DRAWING 1 of 6

Request Number:
PRJ-BOA2-95423-R6

File Location:
W:\Bank of America 2\Art\Drawings\PRJ-BOA2-95423

EXISTING PHOTO- SIGN A



NOTE: RENDERING SCALE IS BASED ON A 7' DOOR SUITE WAS BEEN SUBDIVIDED TO TWO PARTS.

PHOTO ENHANCEMENT- SIGN A



Date:	11-19-14	Project Name:	BANK OF AMERICA
Scale:	NTS	Address:	199 Blue Ravine,
Drawn:	Chris C.	City / State:	Folsom, CA 95630
Sales:	Ron W.	Client Approval:	Date:

This is an original unpublished drawing created by Coast Sign, Inc. It is submitted for your personal use in conjunction with a project being planned for you by Coast Sign, Inc., And shall not be reproduced, used by or disclosed to any firm or corporation for any purpose whatsoever without written permission.

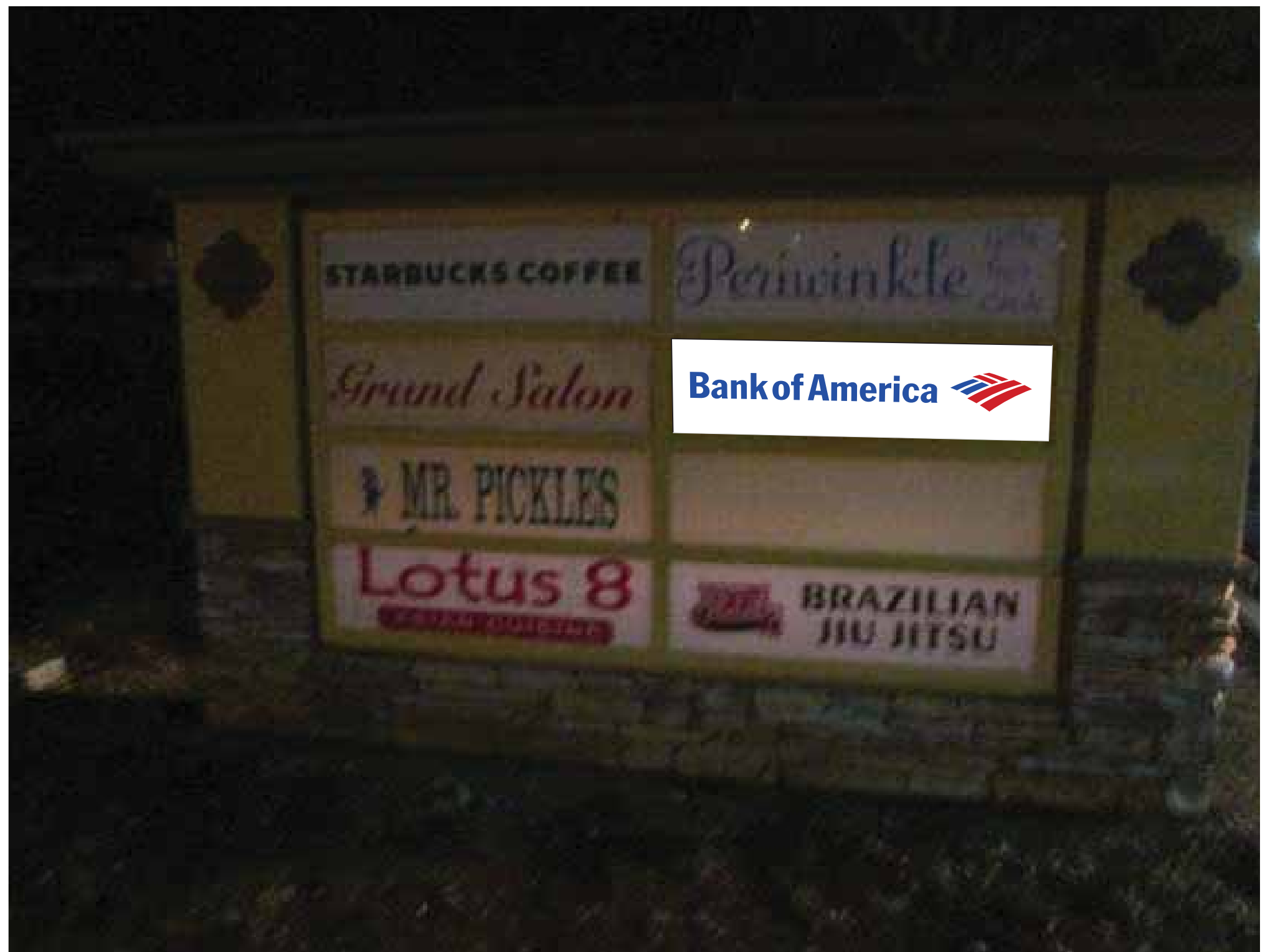
No.	Designer	Date	Revision Notes
1	Blaise S.	12-12-14	Refer to PATHFINDER request for more details.
2	Flor B.	01-12-15	Refer to PATHFINDER request for more details.
3	Hermes A.	02-09-15	Refer to PATHFINDER request for more details.
4	JJ	02-17-15	Refer to PATHFINDER request for more details.
5	HA	2-23-15	Refer to PATHFINDER request for more details.
6	Blaise S.	02-26-15	Refer to PATHFINDER request.

DESIGN DRAWING 2 of 6
Request Number: PRJ-BOA2-95423-R6
File Location: W:\Bank of America 2\Art\Drawings\PRJ-BOA2-95423

EXISTING PHOTO- SIGN B



PHOTO ENHANCEMENT- SIGN B



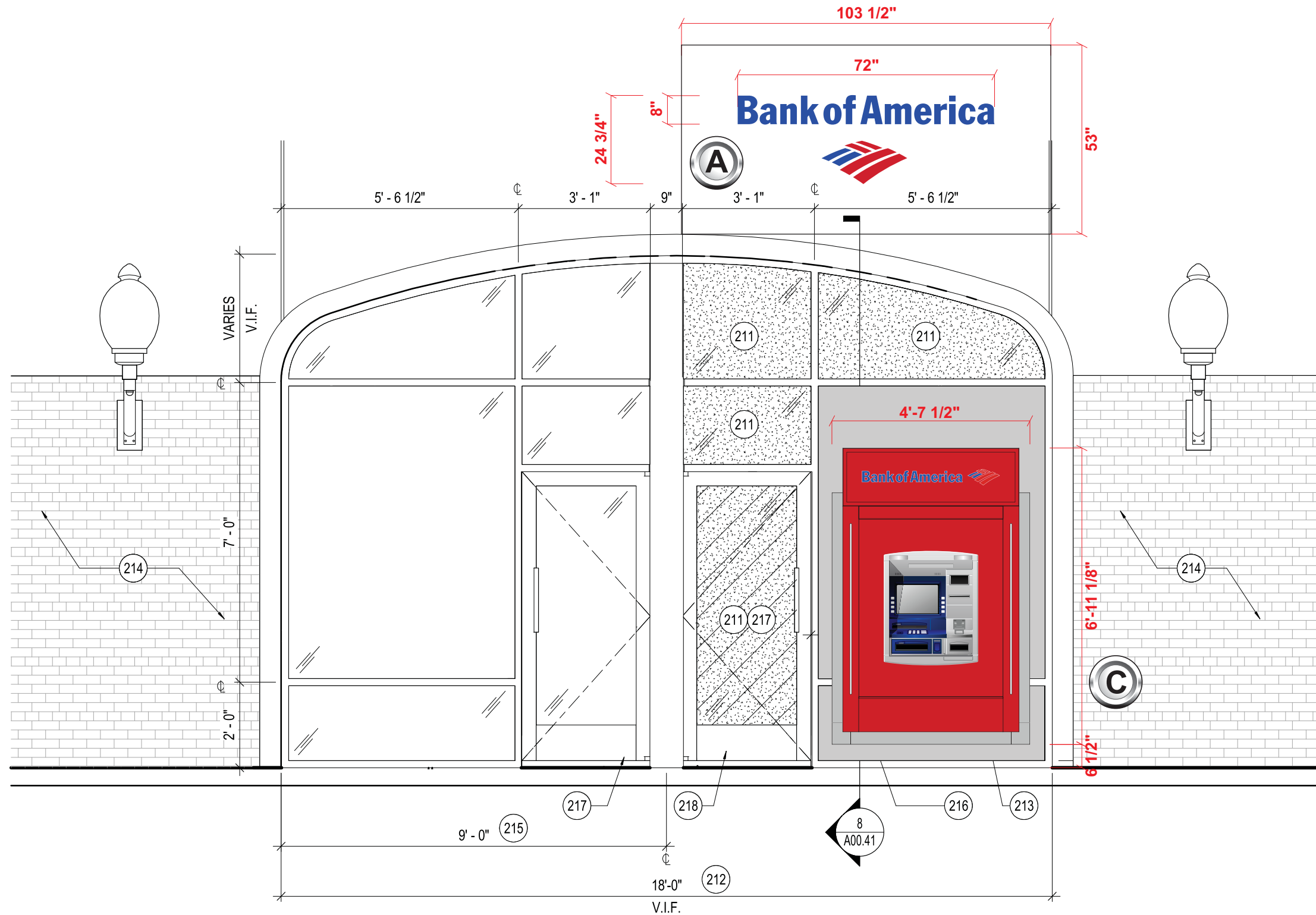
OPPOSITE SIDE



Date: 11-19-14	Project Name: BANK OF AMERICA
Scale: NTS	Address: 199 Blue Ravine,
Drawn: Chris C.	City / State: Folsom, CA 95630
Sales: Ron W.	Client Approval: _____ Date: _____

This is an original unpublished drawing created by Coast Sign, Inc. It is submitted for your personal use in conjunction with a project being planned for you by Coast Sign, Inc., And shall not be reproduced, used by or disclosed to any firm or corporation for any purpose whatsoever without written permission.

No.	Designer	Date	Revision Notes
1	Blaise S.	12-12-14	Refer to PATHFINDER request for more details.
2	Flor B.	01-12-15	Refer to PATHFINDER request for more details.
3	Hermes A.	02-09-15	Refer to PATHFINDER request for more details.
4	JJ	02-17-15	Refer to PATHFINDER request for more details.
5	HA	2-23-15	Refer to PATHFINDER request for more details.
6	Blaise S.	02-26-15	Refer to PATHFINDER request.



PARTIAL EXTERIOR ELEVATION @ ATM WITH SURROUND

NOTE: FIELD VERIFY PLACEMENT PRIOR TO FABRICATION.

Scale: 3/8" = 1'-0"



Date:	11-19-14	Project Name:	BANK OF AMERICA
Scale:	NTS	Address:	199 Blue Ravine,
Drawn:	Chris C.	City / State:	Folsom, CA 95630
Sales:	Ron W.	Client Approval:	Date:

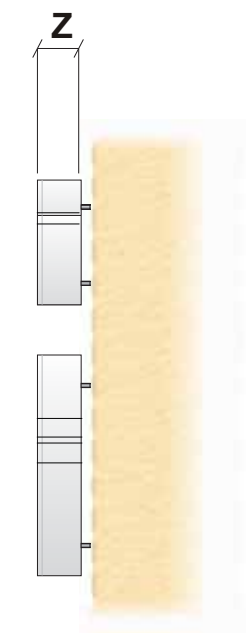
This is an original unpublished drawing created by Coast Sign, Inc. It is submitted for your personal use in conjunction with a project being planned for you by Coast Sign, Inc., And shall not be reproduced, used by or disclosed to any firm or corporation for any purpose whatsoever without written permission.

No.	Designer	Date	Revision Notes
1	Blaise S.	12-12-14	Refer to PATHFINDER request for more details.
2	Flor B.	01-12-15	Refer to PATHFINDER request for more details.
3	Hermes A.	02-09-15	Refer to PATHFINDER request for more details.
4	JJ	02-17-15	Refer to PATHFINDER request for more details.
5	HA	2-23-15	Refer to PATHFINDER request for more details.
6	Blaise S.	02-26-15	Refer to PATHFINDER request.

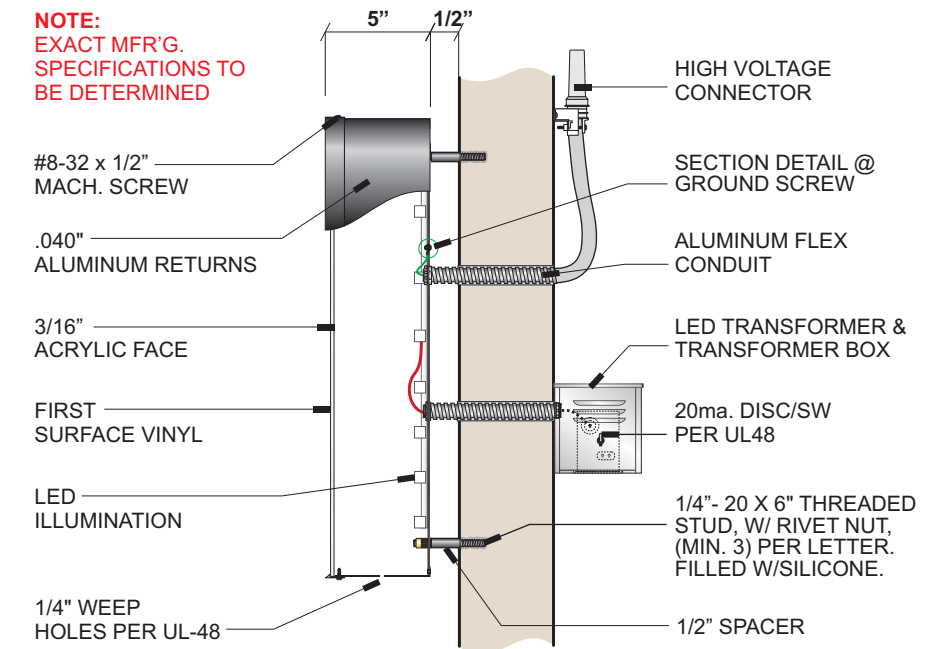
DESIGN DRAWING 4 of 6

Request Number:
PRJ-BOA2-95423-R6

File Location:
W:\Bank of America 2\Art\Drawings\PRJ-BOA2-95423



NOTE:
EXACT MFR'G.
SPECIFICATIONS TO
BE DETERMINED



A FRONT VIEW @ FACE LIT CHANNEL LETTERS
Scale: NTS

SECTION DETAIL @ CHANNEL LETTERS
Scale: NTS

DIMENSION LEGEND					
PRODUCT	Y1	Y2	X	Z	SQ. FT.
G6	36"	111 1/4"	27'-0 1/4"	5"	250.82
G5	30"	92 3/4"	22'-6 1/4"	5"	174.18
G4	24"	74 1/4"	18'-0 1/4"	5"	111.48
G3	18"	55 3/4"	13'-6 1/4"	5"	62.71
G2	15"	46 1/2"	11'-3 1/4"	5"	43.55
G1	12"	37"	108"	5"	27.87
G1.1	9"	27 3/4"	81"	3"	15.68
G1.2	8"	24 3/4"	72"	3"	12.39
G1.3	7"	21 3/4"	63"	3"	9.48
G1.4	6"	18 1/2"	54"	3"	6.97

Specifications:
Faces- Acrylic Letter/Logo faces w/ first surface 3M vinyl. Colors as shown in legend.
Trim Cap Edge- 1" JewelLite trim cap edge.
Returns- Aluminum Letter/Symbol returns painted White satin finish.

COLOR LEGEND	
	PAINT: Mathews Red #MP 49696 VINYL: 3M #3632-2472
	PAINT: Mathews Blue #MP 2167 VINYL: #3632-8222
	PAINT: Mathews White #MP 21668R VINYL: 3M #3635-70 diffuser

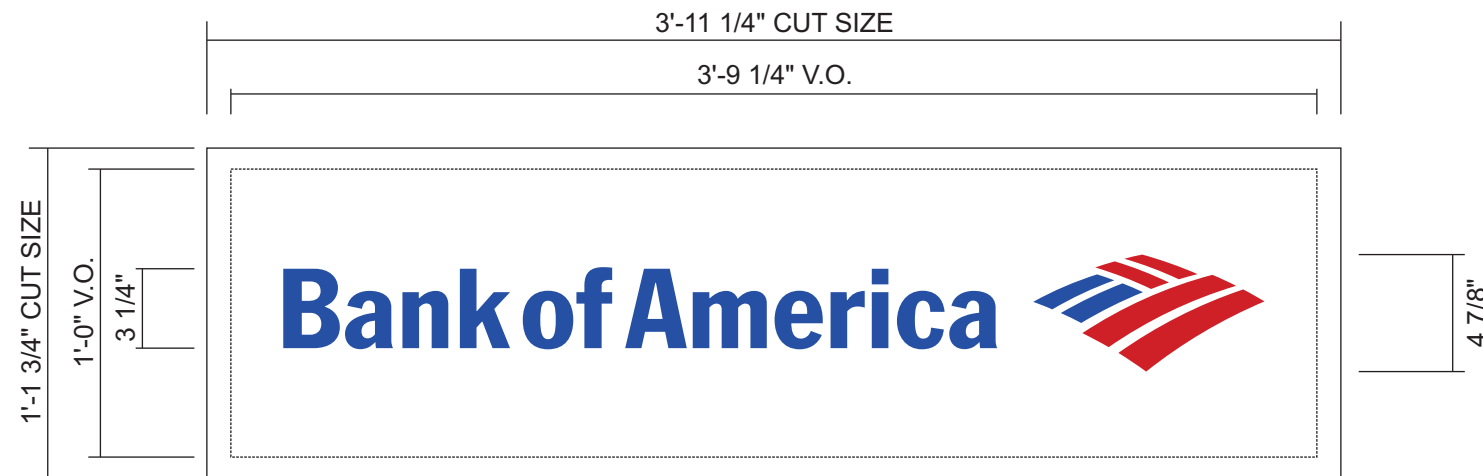


Date: 11-19-14	Project Name: BANK OF AMERICA
Scale: NTS	Address: 199 Blue Ravine,
Drawn: Chris C.	City / State: Folsom, CA 95630
Sales: Ron W.	Client Approval: _____ Date: _____

This is an original unpublished drawing created by Coast Sign, Inc. It is submitted for your personal use in conjunction with a project being planned for you by Coast Sign, Inc., And shall not be reproduced, used by or disclosed to any firm or corporation for any purpose whatsoever without written permission.

No.	Designer	Date	Revision Notes
1	Blaise S.	12-12-14	Refer to PATHFINDER request for more details.
2	Flor B.	01-12-15	Refer to PATHFINDER request for more details.
3	Hermes A.	02-09-15	Refer to PATHFINDER request for more details.
4	JJ	02-17-15	Refer to PATHFINDER request for more details.
5	HA	2-23-15	Refer to PATHFINDER request for more details.
6	Blaise S.	02-26-15	Refer to PATHFINDER request.

DESIGN DRAWING 5 of 6
Request Number: PRJ-BOA2-95423-R6
File Location: W:\Bank of America 2\Art\Drawings\PRJ-BOA2-95423



B FRONT VIEW @ TENANT PANEL Qty. (2)
SCALE: 1 1/2" = 1'-0"

GENERAL SPECIFICATIONS:

MANUFACTURE AND INSTALL (2) TENANT PANELS
 .177" WHITE ACRYLIC VINYL APPLIED ON FIRST SURFACE
 CENTER COPY ON PANEL.

**NOTE: CONCEPTUAL IMAGE ONLY
 PERMIT DRAWING REQUIRED PRIOR
 TO ENGINEERING**

COLOR LEGEND	
■	PAINT: Mathews Red #MP 49696 VINYL: 3M #3632-2472
■	PAINT: Mathews Blue #MP 2167 VINYL: #3632-8222
	PAINT: Mathews White #MP 21668R VINYL: 3M #3635-70 diffuser



Date: 11-19-14	Project Name: BANK OF AMERICA
Scale: NTS	Address: 199 Blue Ravine,
Drawn: Chris C.	City / State: Folsom, CA 95630
Sales: Ron W.	Client Approval: _____ Date: _____

This is an original unpublished drawing created by Coast Sign, Inc. It is submitted for your personal use in conjunction with a project being planned for you by Coast Sign, Inc., And shall not be reproduced, used by or disclosed to any firm or corporation for any purpose whatsoever without written permission.

No.	Designer	Date	Revision Notes
1	Blaise S.	12-12-14	Refer to PATHFINDER request for more details.
2	Flor B.	01-12-15	Refer to PATHFINDER request for more details.
3	Hermes A.	02-09-15	Refer to PATHFINDER request for more details.
4	JJ	02-17-15	Refer to PATHFINDER request for more details.
5	HA	2-23-15	Refer to PATHFINDER request for more details.
6	Blaise S.	02-26-15	Refer to PATHFINDER request.

DESIGN DRAWING 6 of 6
Request Number: PRJ-BOA2-95423-R6
File Location: W:\Bank of America 2\Art\Drawings\PRJ-BOA2-95423