
Carlos Magno Taura Lara

I have about three years of working experience. *For updated reference please visit my channel on You Tube and / or Facebook.*



Facebook:

www.facebook.com/CMLEngineeringdesign/

Canal en You Tube:

[CML Engineering design](#)

Website:

www.cmldesign.com/#

CML Engineering design

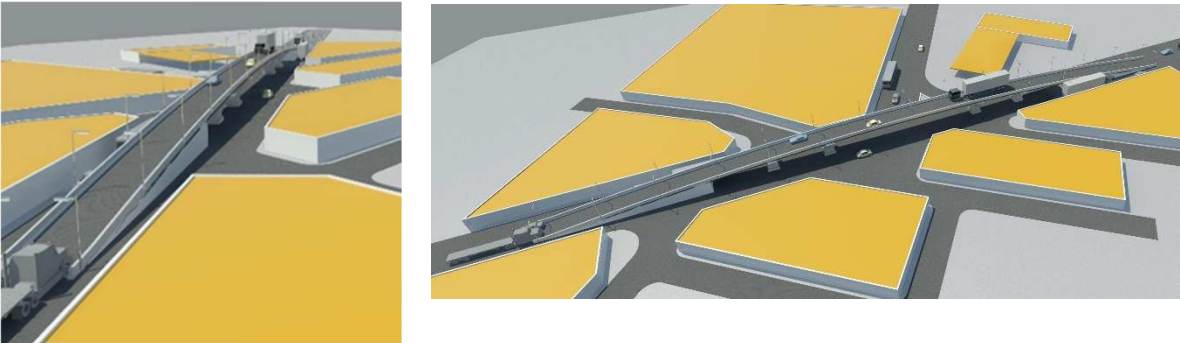
Services:

It provides services in architectural design of all types of buildings and structures in 3D modeling both exterior and interior and kitchen design, giving a more human touch with a professional perspective to meet the needs of our customers. We have services for Systems Engineering and Facilities in any type of building (M.E.P.) compliance with rules, details and design specifications for each system, for better safety on every project. It also has Structures Engineering in steel and / or concrete, using tools that allow us to provide:

- Structural Detailing
- 3D modeling of structures
- Structural design
- Detailed Service Bill of Materials
- Structural analysis
- Architectural design
- Housing
- Residential
- Commercial
- Institutional
- Corporate
- Educational
- Industrial

Work performed with Revit:

Proposal for an overpass at the entrance of the City of San Miguel, El Salvador, C.A., the work consists of reinforced concrete with 2 lanes of traffic in direction West - East, with capacity for heavy vehicular passage in the upper part while in the part lower is for light vehicular passage:



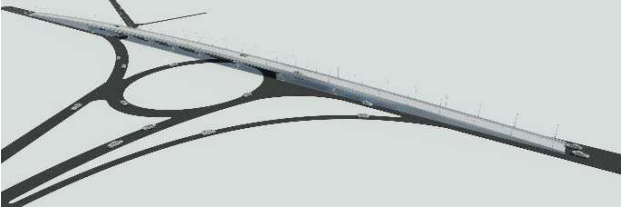
Proposal of buildings for houses in the city of San Miguel, El Salvador, CA, each building consists of 6 levels with steel structure, the place of the site consists of 153 m long and 53 m wide, basic services, potable water, black water and rainwater, electric power, recreation park, with private parking:



Kitchen design, made with cedar wood and "U" design to use all available space.



Proposals for the design of an overpass at the southern entrance of the City of San Miguel, El Salvador, CA, length of lane 165m, with a capacity of 2 lanes in direction to the West - East of the city, functional for heavy and light traffic, The material to be used is reinforced concrete, the rolling folder is asphalt mix.



2 Proposals for meeting room with capacity to accommodate 10 people inside with air conditioning, projector, blackboard, table and chairs.



Administrative office design with capacity for 10 people with its cubicle for each, so you will have an atmosphere of privacy and comfort when working with air conditioning.



Design of house with 2 levels with garage for 3 vehicles, living room, kitchen, 4 bedrooms, 3 bathrooms, office space, laundry.



House design Modern style room with garage for 2 cars, large living room, kitchen, dining room, laundry, 4 bedrooms, space for study room, 3 bathrooms.



Design of a modern economic house with 2 levels elaborated with wood with space for living room, kitchen - dining room, 2 bedrooms, 2 bathrooms, and space for basement.



Design of 1 level country house with space for living room, dining room, kitchen, 4 bedrooms, living room with fireplace, swimming pool, parking, roof with Spanish tile.



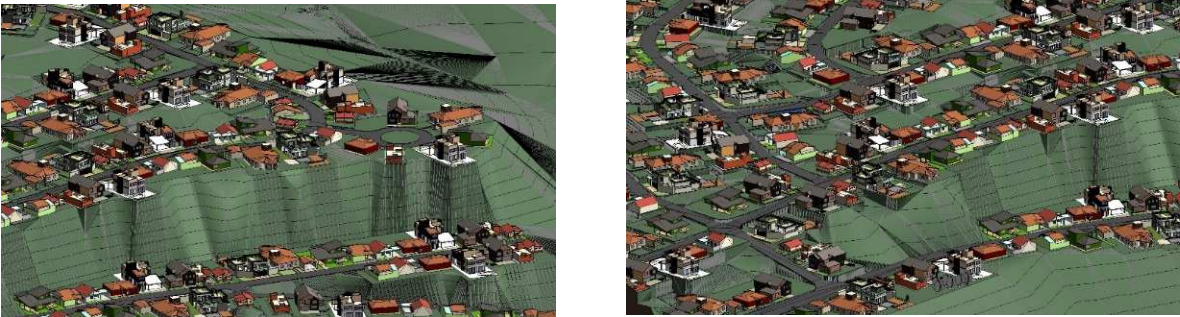
Design of modern style house with 2 levels with space for living room, study room, 3 bathrooms, 5 rooms, kitchen, dining room.



Urbanization design with model house, garage for 2 vehicles, 2 levels with living room, dining room, kitchen, laundry area, outdoor garden, 4 bedrooms, 3 bathrooms, ground capacity for 15 homes with private park area, with energy services electricity, drinking water, sewage, rainwater, easy access, paved roads, lot sizes for each 20m x 10m wide.



Elaboration of Urbanization with 10 model houses and modeling of terrain in mountainous area, each house is modeled its own land for cutting and filling, forming the original design of 380 homes in total, as well as its primary and secondary access streets.



Housing condominium modeling of 8 homes with 2 levels of height, with each consisting of living room, dining room, kitchen, 3 bedrooms, 2 bathrooms.



Building design for office use and radio station, consists of 3 levels of height, side warehouse and access to product discharge, steel design structure with masonry walls, was installed an elevator for personnel and cargo, in the roof space is left to swallow sunlight for better use of natural energy.



Housing condominium modeling of 10 homes, in the back there are 2 access stairs and one in the front, made of concrete and masonry.



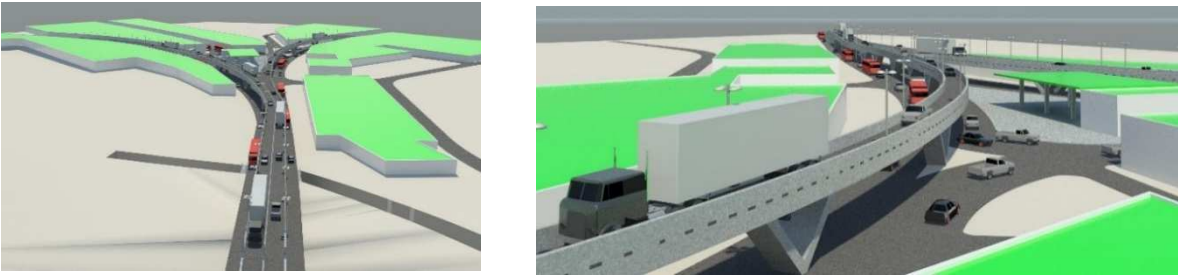
Modeling house with 2 garage doors, living room, dining room, kitchen and second level for 3 bedrooms, with 3 bathrooms and closets in each room.



Modeling of country house with wooden structure with aluminum sheet roof.



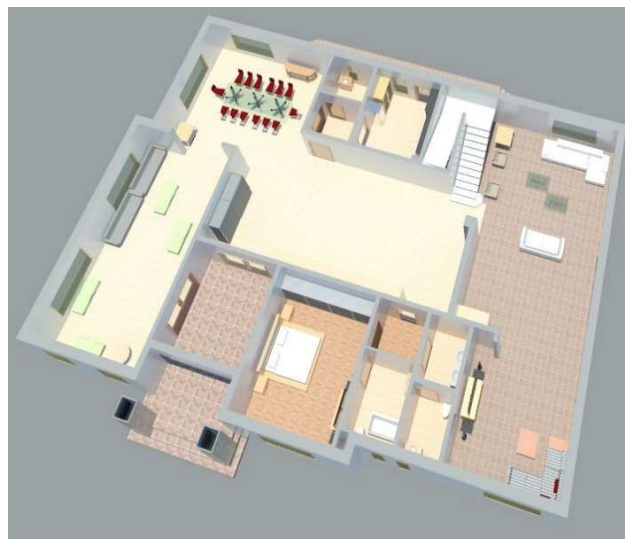
Elaboration of Overpass in reinforced concrete structure as a proposal, 3D modeling of final work.



Modelado de Viñedo **o fournier** hubicado La Bodega está situada en una finca de 263 has en el departamento de San Carlos a 105 km de la Ciudad de Mendoza, Argentina.



Elaboration of 3d model for the interior of the house and location of areas for basic needs.



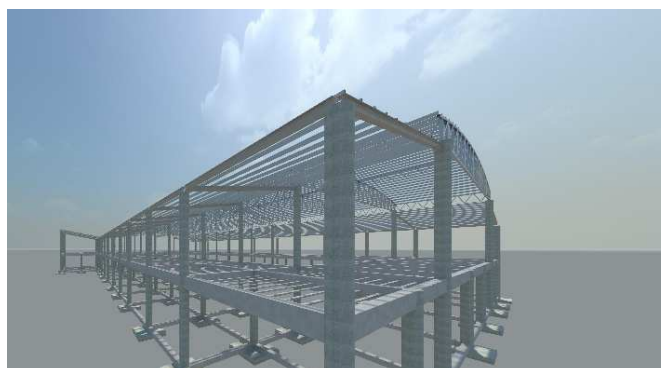
Modeling of country house, in the back the kitchen is located and windows were installed for better ventilation and use of light and natural air.



Modeling from house to beach, seated on piles to avoid problems with the rise of the tide.



Elaboration of concrete structure for main municipal market, consists of 2 levels and steel structure roof.



Modeling of a mansion for a client from Canada, two housing projects were proposed with their respective spaces to be able to choose the combination that best suited them.



Model for walkway in main street of 2 lanes in each direction.



Modeling of a house with 2 levels with basic services for better comfort for the user.



1 level residential house consists of living room, dining room, kitchen, exterior deck, garage for 1 vehicle with 3 bedrooms and 2 bathrooms inside.



Kitchen design with island for better use of spaces.



Modelado de cocina con isla y con los implementos necesarios para su mejor confort y uso del Cliente.

